

# Employ Loop & Lines

Interface®

## Employ Loop & Lines

### 完美的协同效应

Employ 系列让空间装饰事半功倍, 能够提供更具设计创意的选择以适应不同的使用场景。Employ Loop 的平整表面, 帮助营造良好的艺术美感和整体布局。Employ Lines 则具有突出的线性纹理, 适用于无方向安装或顺铺安装, 可以用作 Employ Loop 系列中搭配柔和中性色和大胆明亮色之间的理想过渡。

Employ Loop & Lines 系列中所有产品在其整个产品生命周期内都是碳中和的。

### Perfect Synergy

The Employ collection offers great value for money, and allows for more creative design options to fit any space. Employ Loop has a level surface and offers a great wall-to-wall aesthetic. Employ Lines has a strong linear pattern, suitable for non-directional or monolithic installation, which can be used as the ideal transition between bright, bold and neutral colourways in the Employ loop range.

Employ Loop & Lines are carbon neutral throughout their full lifecycle.





产品/PRODUCT EMPLOY LOOP 颜色/COLOUR TROPICAL 安装/INSTALLED 顺铺/MONOLITHIC  
产品/PRODUCT EMPLOY LINES 颜色/COLOUR CARIBBEAN 安装/INSTALLED 设计铺装/DESIGN BY TILE

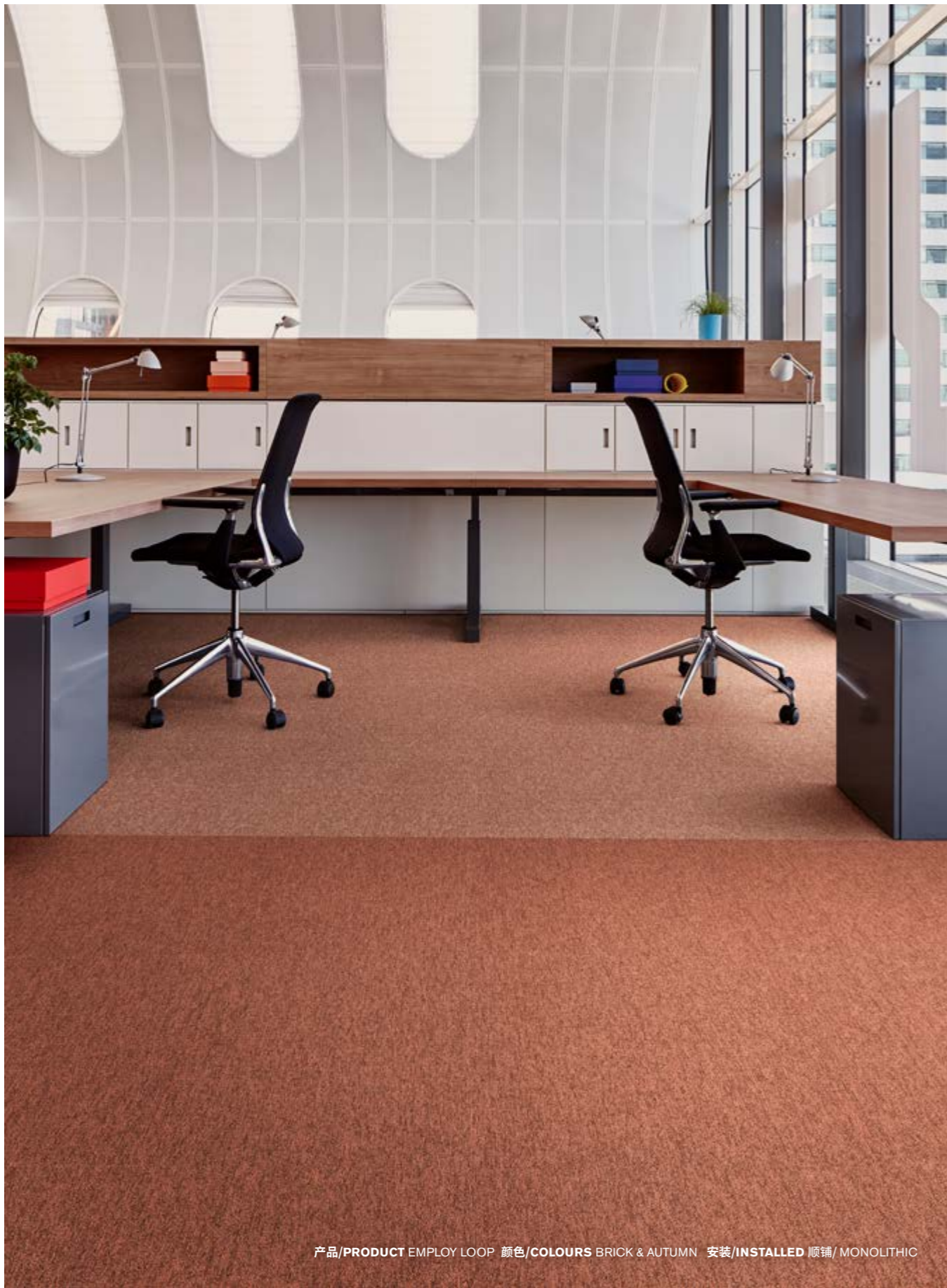


产品/PRODUCT EMPLOY LOOP 颜色/COLOURS TRUFFLE & RAFFIA 颜色/INSTALLED 顺铺/MONOLITHIC  
产品/PRODUCT EMPLOY LINES 颜色/COLOUR HARVEST 安装/INSTALLED 无方向/NON DIRECTIONAL



产品/PRODUCT EMPLOY LOOP 颜色/COLOURS ASH & GRITSTONE 安装/INSTALLED 顺铺/MONOLITHIC





产品/PRODUCT EMPLOY LOOP 颜色/COLOURS BRICK & AUTUMN 安装/INSTALLED 顺铺/MONOLITHIC

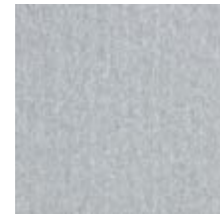
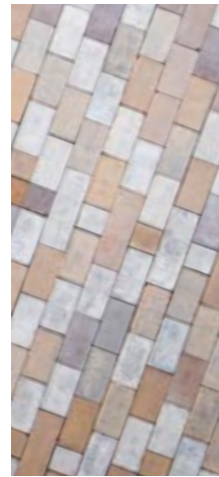


产品/PRODUCT EMPLOY LOOP 颜色/COLOURS SHALE & CLEMENTINE 安装/INSTALLED 顺铺/MONOLITHIC  
产品/PRODUCT EMPLOY LINES 颜色/COLOUR SUNSET 安装/INSTALLED 设计铺装/DESIGN BY TILE



Employ Loop 色系/ Colourline

---



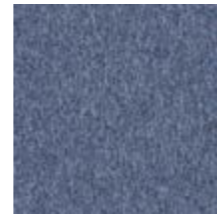
4197026 GROUND



4197027 URBAN



4197008 FOUNTAIN



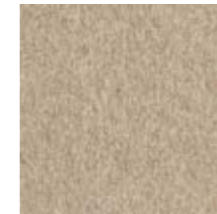
4197013 CRYSTAL



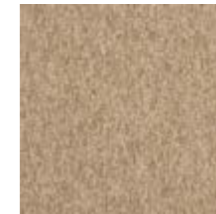
4197036 INK



4197023 LAVENDER



4197001 RAFFIA



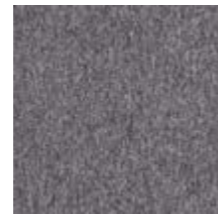
4197004 CARAMEL



4197007 NUTMEG



4197028 ASH



4197030 GRITSTONE



4197011 CIRRUS



4197016 NORDIC



4197014 TROPICAL



4197017 PEACOCK



4197024 SALSA



4197033 BRICK



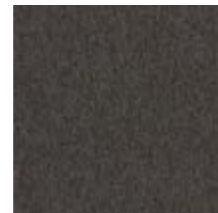
4197032 AUTUMN



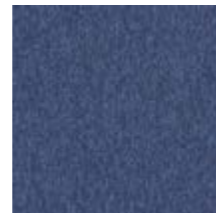
4197025 COTTON



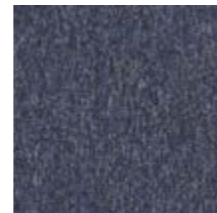
4197029 GRANITE



4197006 SHALE



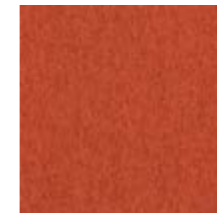
4197019 BARING



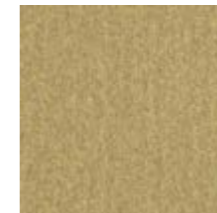
4197012 ATLANTIC



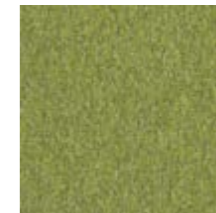
4197022 SAPPHIRE



4197021 CLEMENTINE



4197031 SANDS



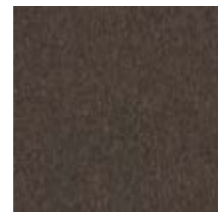
4197015 KIWI



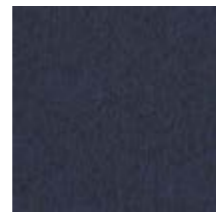
4197002 TRUFFLE



4197005 PRALINE



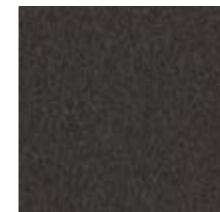
4197010 RYE



4197020 OXFORD



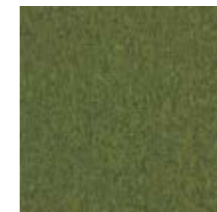
4197003 SHADOW



4197009 JET



4197034 FERN



4197018 EDEN



4197035 EVERGLADE

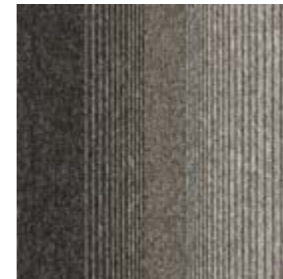




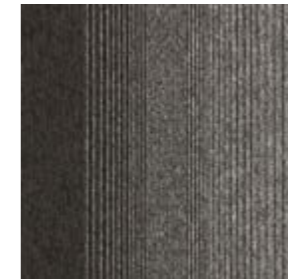
Employ Lines 色系/ Colourline



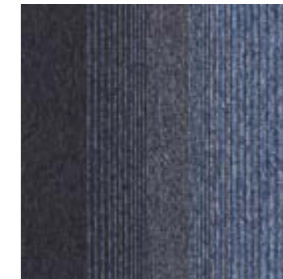
4223001 HARVEST



4223002 FORMATION



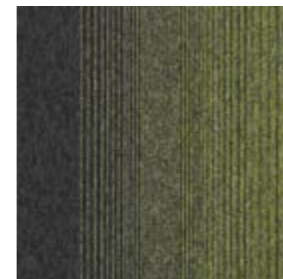
4223003 QUARRY



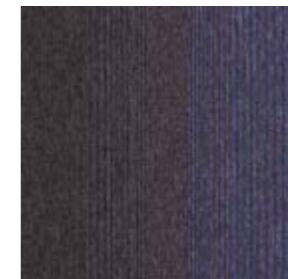
4223004 WATERFALL



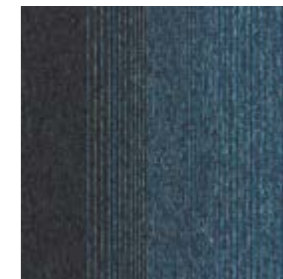
4223005 SUNSET



4223006 MEADOW



4223007 IRIDESCENT



4223008 CARIBBEAN



## 规格/Specifications

### Employ Loop

产品型号/Style Code	4197
产品结构	簇绒平圈绒
Product Construction	Tufted Level Loop Pile
纱线系统	100%原液染色纱线
Yarn System	100% Solution Dyed Nylon
簇绒机器规格/Gauge	1/10
毯毛厚度/Pile Thickness	2.6mm (± 0.5mm)
总厚度/Total Thickness	5.6mm (± 0.5mm)
地毯尺寸/Tile Size	50x50cm
建议使用区域/Area of Use	商用 - 人流密集区域
抗菌类型/Lifetime Antimicrobial	Intersept®
抗污类型/Soil/Stain Protection	Protekt®
铺装方式	顺铺、直角转弯
Installation Methods	Monolithic, Quarter Turn



顺铺 直角转弯

### Employ Lines

产品型号/Style Code	4223
产品结构	簇绒平圈绒
Product Construction	Tufted Patterned Level Loop Pile
纱线系统	100%原液染色纱线
簇绒机器规格/ Yarn System	100% Solution Dyed Nylon
簇绒机器规格/ Machine Gauge	1/10
毯毛厚度/Pile Thickness	2.5mm (± 0.5mm)
总厚度/Total Thickness	5.6mm (± 0.5mm)
地毯尺寸/Tile Size	50x50cm
建议使用区域/Area of Use	商用 - 人流密集区域
抗菌类型/Lifetime Antimicrobial	Intersept®
抗污类型/Soil/Stain Protection	Protekt®
铺装方式	无方向、直角转弯、顺铺
Installation Methods	Non Directional, Quarter Turn, Monolithic



无方向 直角转弯 顺铺



Carbon Neutral Floors™



英特飞在亚太地区的所有生产设施都经过ISO 9001质量管理体系和ISO 14001环境管理体系的认证。  
All Interface manufacturing facilities in the Asia Pacific region maintain registration to ISO 9001 Quality Management Systems and ISO 14001 Environmental Management Systems.

产品规格可能会受到实际生产公差的影响，且可能会随时更新，恕不另行通知。不同生产批次间的少许色差实属正常，整体安装规划应将其考虑在内。产品质保以生产商提供的书面质保文件为准。免责声明，对于其它保证，包括但不限于对特定用途的适用性、适用性的任何暗示性的担保，本公司概不负责。敬请联系您的销售代表，获得书面质保文件。  
Production specifications are subject to normal manufacturing tolerances and may be changed without notice. Slight variation in colour among different production lots are normal and should be considered in the overall installation plan. Products covered by manufacturer's written warranty only. All other warranties, including without limitation any implied warranties of merchantability or fitness for particular purpose, are hereby disclaimed. Contact your representative for written warranty information.



**Carbon Neutral Floors™**

[www.interface.com.cn](http://www.interface.com.cn)

**太仓生产基地/Manufacturing Facilities**

英特飞中国/Interface China  
tel: +86 512 5373 9888

**上海/Shanghai**

英特飞中国/Interface China  
tel: +86 21 6340 3868

**北京/Beijing**

英特飞中国/Interface China  
tel: +86 10 6590 7810

**香港/Hong Kong**

英特飞中国/Interface China  
tel: +852 2802 0838

**日本/Japan**

英特飞日本/Interface Japan  
tel: +81 3 5733 5211

**韩国/South Korea**

英特飞韩国/Interface South Korea  
tel: +82 2 555 1734

**东南亚/South East Asia**

英特飞亚洲/Interface Asia  
tel: +65 6478 1510

**澳大利亚/Australia**

英特飞澳大利亚/Interface Australia  
local toll free: 1800 804 361

**印度/India**

英特飞印度/Interface India  
tel: +91 80 4613 1313

07/2022



Climate change is undeniable. And reversible. Our mission is to prove it. Join the #ClimateTakeBack and help create a climate fit for life.

气候变化不可否认，但可以逆转。我们的任务就是要证明这一点。加入#ClimateTakeBack(气候回归计划)，帮助创造一个万物共荣的气候。